

# UNIT 102-A / 2 BEDROOM

(Ground Floor)

2 BD | 2.5 BA | 1,562 SQ.FT. | BACKYARD: 1,400 SQ.FT.



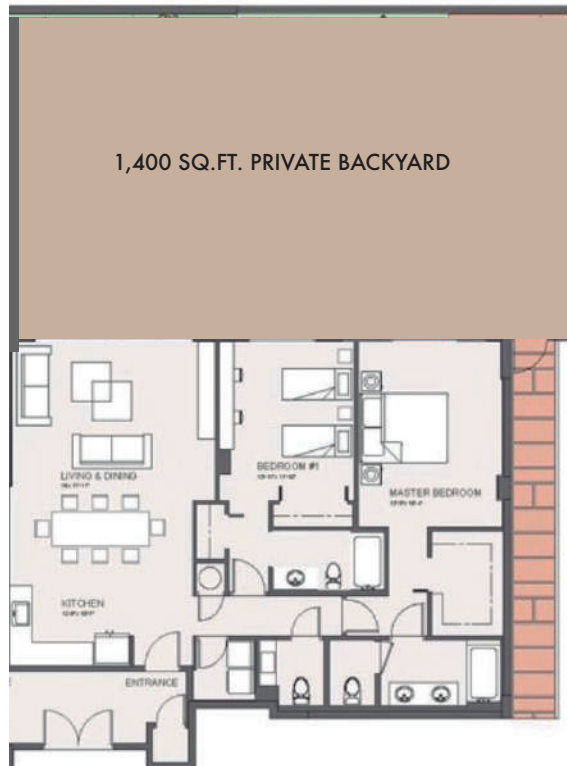
Stated dimensions are measured to the exterior boundaries of the exterior walls and the centerline of interior demising walls and in fact vary from the dimensions that would be determined by using the description and definition of the "unit" set forth in the declaration. All floor plans and development plans are approximate and subject to change.



# UNIT 102-B / 2 BEDROOM

(Ground Floor)

2 BD | 2.5 BA | 1,562 SQ.FT. | BACKYARD: 1,400 SQ.FT.



Stated dimensions are measured to the exterior boundaries of the exterior walls and the centerline of interior demising walls and in fact vary from the dimensions that would be determined by using the description and definition of the "unit" set forth in the declaration. All floor plans and development plans are approximate and subject to change.



# UNIT 201 / 2 BEDROOM

(2nd Floor)

2 BD | 2.5 BA | 1,560 SQ.FT. | BALCONY: 232 SQ.FT.



Stated dimensions are measured to the exterior boundaries of the exterior walls and the centerline of interior demising walls and in fact vary from the dimensions that would be determined by using the description and definition of the "unit" set forth in the declaration. All floor plans and development plans are approximate and subject to change.



# UNIT 203 / 2 BEDROOM

(2nd Floor)

2 BD | 2.5 BA | 1,534 SQ.FT. | BALCONY: 232 SQ.FT.



Stated dimensions are measured to the exterior boundaries of the exterior walls and the centerline of interior demising walls and in fact vary from the dimensions that would be determined by using the description and definition of the "unit" set forth in the declaration. All floor plans and development plans are approximate and subject to change.



# UNIT 301 / 2 BEDROOM

(3rd Floor)

2 BD | 2.5 BA | 1,593 SQ.FT. | BALCONY: 232 SQ.FT.



Stated dimensions are measured to the exterior boundaries of the exterior walls and the centerline of interior demising walls and in fact vary from the dimensions that would be determined by using the description and definition of the "unit" set forth in the declaration. All floor plans and development plans are approximate and subject to change.



# UNIT 303 / 2 BEDROOM

(3rd Floor)

2 BD | 2.5 BA | 1,560 SQ.FT. | BALCONY: 169 SQ.FT.



Stated dimensions are measured to the exterior boundaries of the exterior walls and the centerline of interior demising walls and in fact vary from the dimensions that would be determined by using the description and definition of the "unit" set forth in the declaration. All floor plans and development plans are approximate and subject to change.



# UNIT 101 / 3 BEDROOM

(Ground Floor)

3 BD | 3.5 BA | 1,834 SQ.FT. | BALCONY: 252 SQ.FT.



Stated dimensions are measured to the exterior boundaries of the exterior walls and the centerline of interior demising walls and in fact vary from the dimensions that would be determined by using the description and definition of the "unit" set forth in the declaration. All floor plans and development plans are approximate and subject to change.



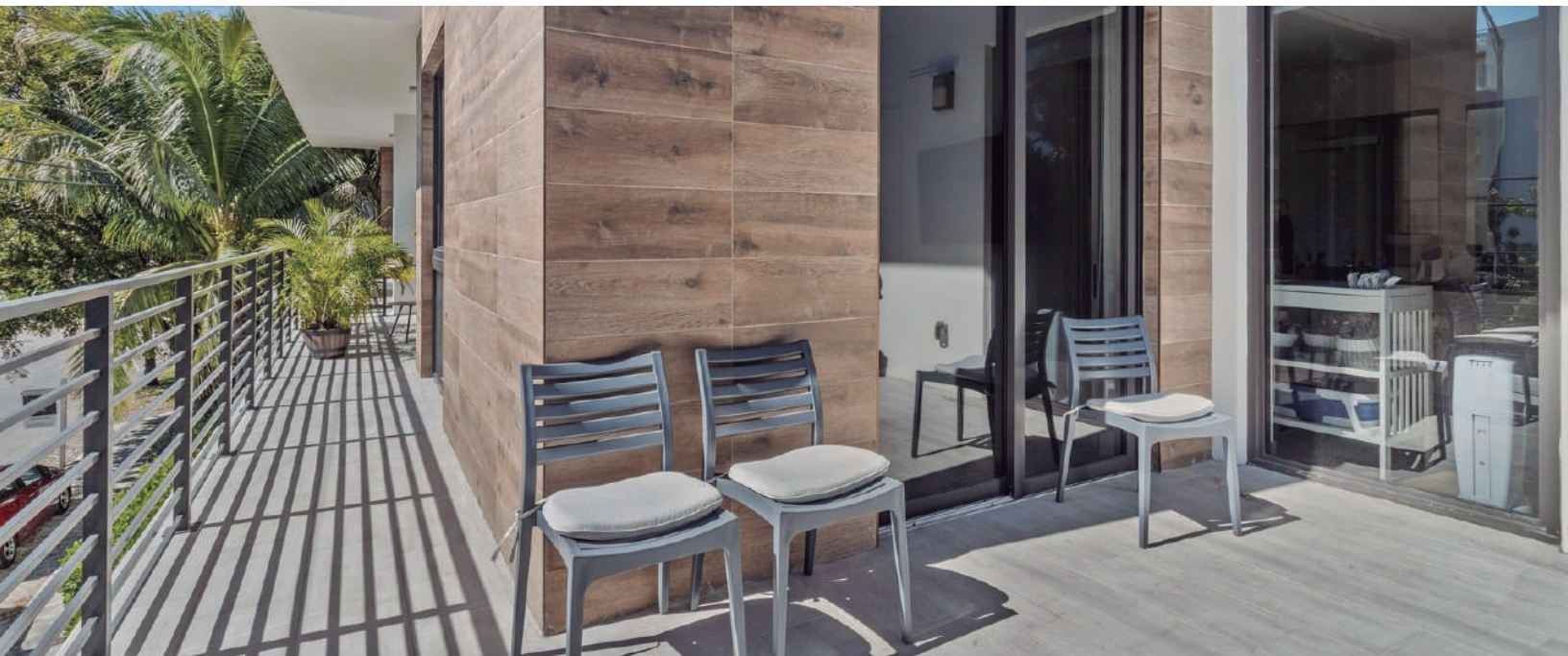
# UNIT 202 / 3 BEDROOM

(2nd Floor)

3 BD | 3.5 BA | 1,834 SQ.FT. | BALCONY: 413 SQ.FT.



Stated dimensions are measured to the exterior boundaries of the exterior walls and the centerline of interior demising walls and in fact vary from the dimensions that would be determined by using the description and definition of the "unit" set forth in the declaration. All floor plans and development plans are approximate and subject to change.

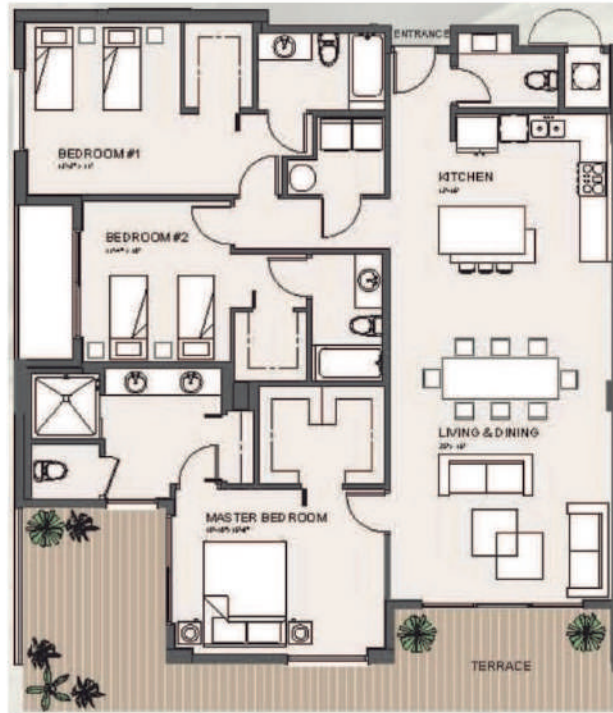




# UNIT 204 / 3 BEDROOM

(2nd Floor)

3 BD | 3.5 BA | 1,771 SQ.FT. | BALCONY: 413 SQ.FT.



Stated dimensions are measured to the exterior boundaries of the exterior walls and the centerline of interior demising walls and in fact vary from the dimensions that would be determined by using the description and definition of the "unit" set forth in the declaration. All floor plans and development plans are approximate and subject to change.



# UNIT 302 / 3 BEDROOM

(3rd Floor)

3 BD | 3.5 BA | 1,834 SQ.FT. | BALCONY: 196 SQ.FT.



Stated dimensions are measured to the exterior boundaries of the exterior walls and the centerline of interior demising walls and in fact vary from the dimensions that would be determined by using the description and definition of the "unit" set forth in the declaration. All floor plans and development plans are approximate and subject to change.



# UNIT 304 / 3 BEDROOM

(3rd Floor)

3 BD | 3.5 BA | 1,771 SQ.FT. | BALCONY: 196 SQ.FT.



Stated dimensions are measured to the exterior boundaries of the exterior walls and the centerline of interior demising walls and in fact vary from the dimensions that would be determined by using the description and definition of the "unit" set forth in the declaration. All floor plans and development plans are approximate and subject to change.

